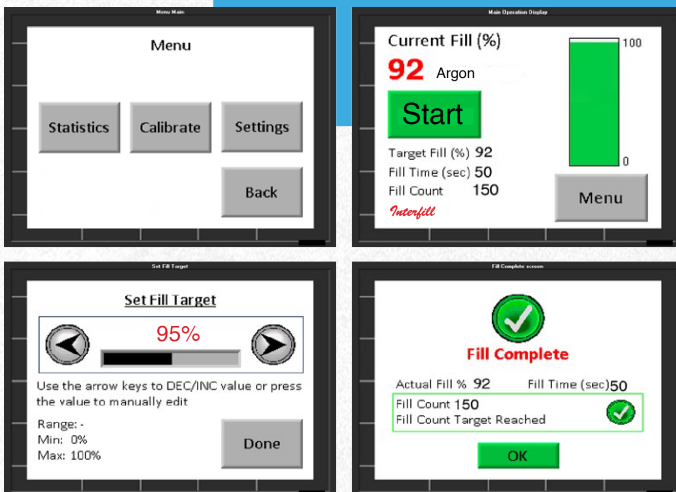




The Firstfill is an introductory gas filler for customers wanting to make low volumes of Argon filled insulated glass units. It has a flow rate of 10 litres a minute and uses the two hole filling method.

Closely modelled on the larger Interfill machine the Firstfill features the same quick reaction gas sensor as used in the rest of the Inagas range. Firstfill features include a vacuum gas sensor pump, semi-auto calibration, adjustable gas fill targets and IG production statistics.



TOUCH SCREENS

A 100mm touch screen gives a live display of the timed gas filling process and is also used to access the menu screen. From the menu screen gas percentage levels, statistic info and calibration features can be accessed.

SPECIFICATIONS

Dimensions: H 141mm x W 200mm x D 450mm, 100mm touch screen control, Visual and audible signal on completion of fill, Manual calibration of sensor, Ability to change gas fill percentages

Flow Rate: Up to 10 litres per minute, Two hole filling, Vertical filling, Optional mobile trolley
Optional 1.5mm filling lance for narrow units

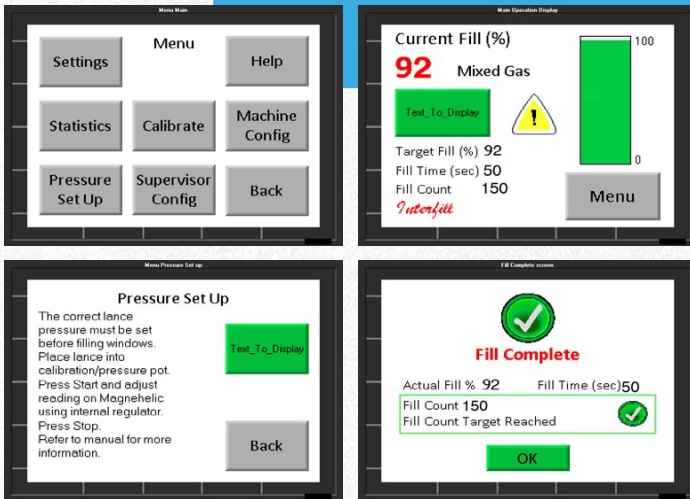
FILLING TIMES

Unit size 1000mm x 1000mm x 15.5mm | Two hole filling 185 seconds



The Interfill is a compact single line 30 litre a minute machine designed for the production of Argon gas filled insulated glass units. The Interfill is capable of gas filling using a one or two hole filling method.

The Interfill KX has the additional feature of variable vacuum and flow rate control making ideal for gas filling with Krypton/ Xenon or mixed gases.



TOUCH SCREENS

A 100mm touch screen gives a live display of the timed gas filling process and is also used to access the menu screen. From the menu screen gas percentage levels, overfill timer, data logging, pressure set and calibration features can be accessed. A foot pedal switch can be used to remotely start the filling process.

SPECIFICATIONS

Dimensions: H 141mm x W 200mm x D 450mm, 100mm touch screen control, Visual and audible signal on completion of fill, Semi auto calibration of sensor, Ability to change gas fill percentages, Variable overfill and dwell times, Data logging

Flow Rate: 15-30 litres per minute per line Or 1-30 litres for KX version, One hole or two hole filling options, Ability to vary gas flow to suit hole size, Alert when gas bottle empty Optional trolley.

FILLING TIMES

Unit size 1000mm x 1000mm x 15.5 mm | One hole filling 110 seconds | Two hole filling 65 seconds

CONTACT

SALES

☎ 01455 251151

✉ sales@atlantic-machinery.co.uk

STUART HEADINGTON

☎ 07803 758291

✉ s.headington@atlantic-machinery.co.uk

