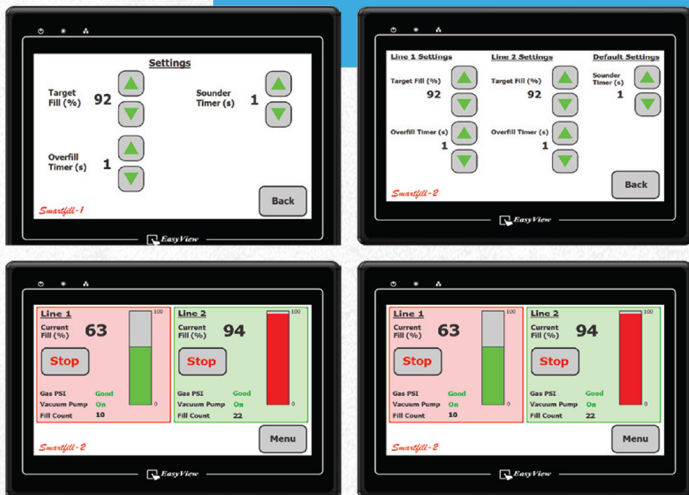


Smartfill-1 and Smartfill-2



The Smartfill-1 is a single line 30 litre a minute machine designed for the production of Argon gas filled insulated glass units. The Smartfill-1 is the first machine in the Inagas range to be equipped with the unique Smart start lance system which can be used either to gas fill using the one or two hole filling method.

The Smartfill-2 is a dual line version of the Smartfill-1 designed for medium to high production of Argon gas filled insulated glass units. Each line operates independently from one another with a combined maximum flow rate of 60 litres per minute using the Smart start lance system.



TOUCH SCREENS

The 250mm touch screen gives a live display of the gas filling process and is also used to access the menu screen. From the menu screen gas percentage levels, overfill timer, data logging, pressure set up and calibration features can be accessed. A Smartfill-1 is fully upgradeable to Smartfill-2 specifications at a latter time.

SPECIFICATIONS

Dimensions: H 407mmxW540mmxD656mm, 250mm Touch Screen control, Visual & audible signals on completion of fill, Auto and manual calibration of sensor, Ability to change gas fill percentages, Variable overfill Data logging

Flow Rate: 30 litres per minute per line, One hole or two hole filling options, Vertical or horizontal filling options Alert when gas bottle empty, Optional trolley

FILL TIMES

Unit size 1000cm x 1000mm x 15.5mm | Two hole filling 65 seconds | One hole filling 95 seconds (Per filling line)

Smartfill-4

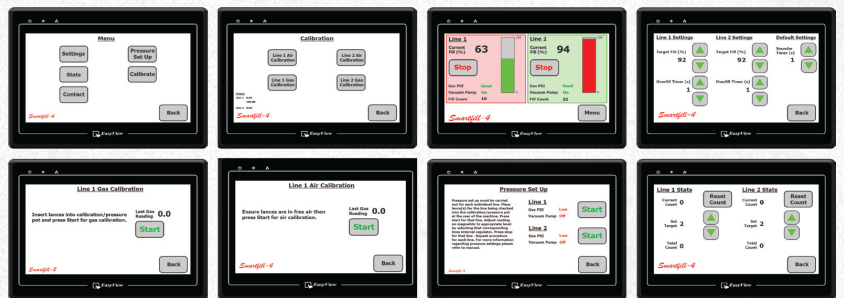


The Smartfill-4 is a four line machine designed for high production of Argon gas filled insulated glass units. Each line operates independently from one another with a combined maximum flow rate of 120 litres per minute using the Smart start lance system.

The Smartfill-4 has all the benefits of having two Smartfill-2 machines but with the added convenience and mobility of a built in trolley system.

TOUCH SCREENS

The two 250mm touch screens give a live display of the gas filling process and is also used to access the menu screen. From the menu screen gas percentage levels, overflow timer, data logging, pressure set up and calibration features can be accessed.



SPECIFICATIONS

Dimensions: H 1516mm x W 735mm x D 701mm, 250mm Touch Screen controls, Visual & audible signals on completion of fill, Auto and manual calibration of sensor, Ability to change gas fill percentages Variable overflow, Data logging

Flow Rate: Up to 30 litres per minute per line, Two hole or one hole filling options, Vertical filling or horizontal options, Alert when gas bottle empty, Four filling lines with SmartStart lance system

FILL TIMES

Unit size 1000cm x 1000mm x 15.5mm | Two hole filling 65 seconds | One hole filling 95 seconds (Per filling line)

CONTACT

SALES

☎ 01455 251151
✉ sales@atlantic-machinery.co.uk

STUART HEADINGTON

☎ 07803 758291
✉ s.headington@atlantic-machinery.co.uk