

ATLANTIC Machinery

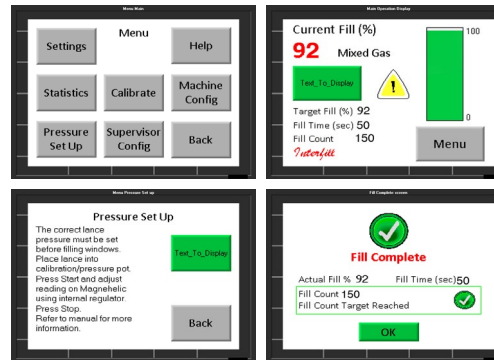
Interfill

The Interfill is a compact single line 30 litre a minute machine designed for the production of Argon gas filled insulated glass units. The Interfill is capable of gas filling using a one or two hole filling method.

The Interfill KX has the additional feature of variable vacuum and flow rate control making ideal for gas filling with Krypton/ Xenon or mixed gases.



Touch Screens



A 100mm touch screen gives a live display of the timed gas filling process and is also used to access the menu screen. From the menu screen gas percentage levels, overfill timer, data logging, pressure set and calibration features can be accessed. A foot pedal switch can be used to remotely start the filling process.

Specifications

Dimensions:

H 141mm x W 200mm x D 450mm

100mm touch screen control

Visual and audible signal on completion of fill

Semi auto calibration of sensor

Ability to change gas fill percentages

Variable overfill and dwell times

Data logging

Flow Rate: 15-30 litres per minute per line

Or 1-30 litres for KX version

One hole or two hole filling options

Ability to vary gas flow to suit hole size

Alert when gas bottle empty

Optional trolley.

Filling Times

Unit size 1000mm x 1000mm x 15.5 mm

One hole filling 110 seconds

Two hole filling 65 seconds